



www.fotek.ru/en

Gynecology

Urology

Gastroenterology

Otorhinolaryngology

**Traumatology
and orthopedics**

**Thoracic, general
and plastic surgery**



Series 140

has argon

Series 350

no argon

Made in Russia

**Broadband radiowave
and argon beam electrosurgical units**

Argon plasma coagulation and cutting (APC)

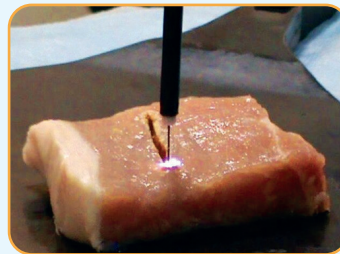
- General surgery
- Purulent surgery
- Thoracic surgery
- Obstetrics and gynecology
- Flexible and rigid endoscopy
- ENT surgery
- Plastic surgery

Advantages:

- Contactless coagulation, no adhesion of tissue to electrode
- Controlled depth of tissue coagulation (no more than 3 mm)
- The lack of smoke and odor, good visualization of the affected area
- Effective hemostasis, blood loss reduction
- Argon plasma sterilization effect
- Minimal carbonization

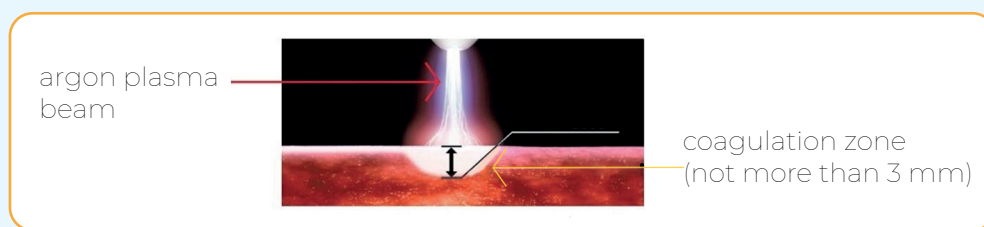


Argon plasma beam coagulation SPRAY mode, nozzle electrode



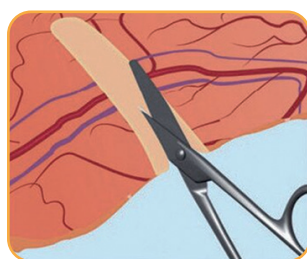
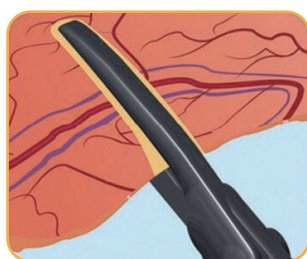
Cutting in argon environment «FULGUR» mode, knife electrode

The process of argon plasma ablation:



«T-SUTURE» («Thermo-Sealing») mode-sealing (ligation) of blood vessels

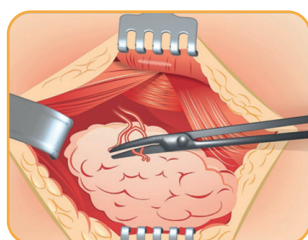
The principle of operation:



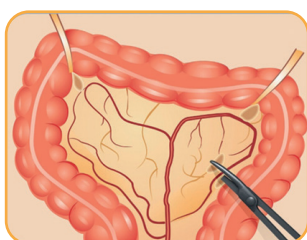
«Termo-suture» is a technology for welding (sealing) walls of large diameters blood vessels (up to 7 mm) and vascularized tissues by the bipolar radio-frequency coagulation method under automatic control of coagulation.

Advantages:

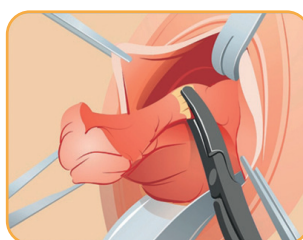
- Reliability, durability of vessel ligation, comparable to traditional methods
- Reduced operation time
- Reduced suture costs
- Reduced risk of wound inflammation and suppuration due to the absence of foreign materials
- Reduced pain in the postoperative period



Thyroid resection



Bowel resection



Transvaginal hysterectomy



Hemorrhoidectomy

Mode for work in liquid environment

- The unit enables to cut, coagulate and vaporize tissue during endoscopic operations in organ's cavity with solution.

Advantages:

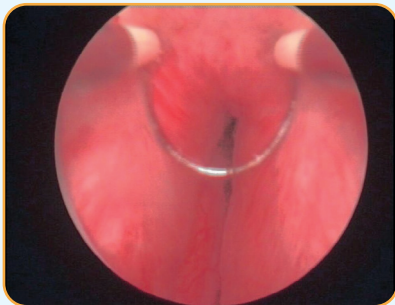
- Thin and smooth cut surface
- No tissue sticking to electrode
- Effective stop bleeding

UROLOGY (transurethral resection):

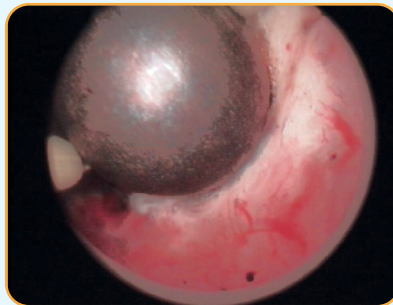
- Transurethral resection of the prostate (TURP)
- Transurethral resection of bladder tumor (TURBT)
- Urethral stricture dissection

GYNECOLOGY (hysteroscopy):

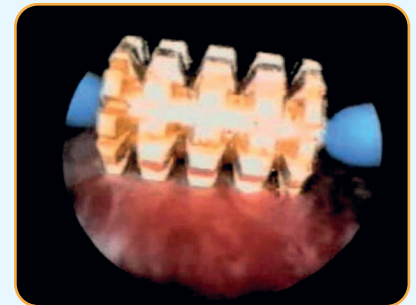
- Myomectomy
- Polypectomy
- Intrauterine synechia dissection
- Uterine septum dissection
- Resection (ablation) of the endometrium



Tissue resection
by loop electrode

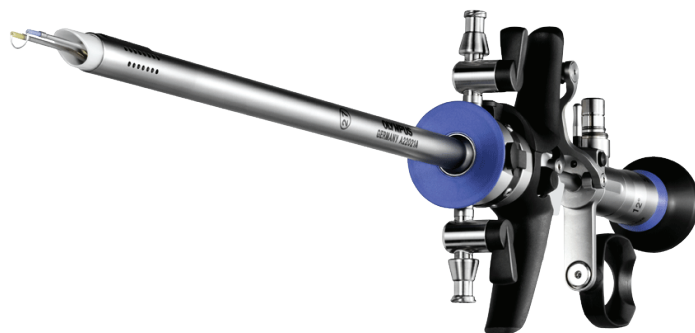


Tissue coagulation
by ball electrode

















Tissue vaporization
by stud electrode

Electrodes for resectoscopes



Technical characteristics and modes of units (series 140 and 350)

Operating modes and technical characteristics	EA 142 M	EA 141 M	E 353 M	E 352 M	E 354 M
Rated output power, not less than	400 W	400 W	400 W	400 W	400 W
MONOPOLAR MODES:					
CUT 	•	•	•	•	•
BLEND 	•	•	•	•	•
BLEND 1 	•	•	•	•	•
TUR/VAP 	•		•	•	
SOFT 	•	•	•	•	•
FORCED 	•	•	•	•	•
FULGUR 			•	•	•
SPRAY 			•	•	•
BIPOLAR MODES:					
BI-BLEND 	•	•	•	•	
BI-COAG 	•	•	•	•	•
BI-AUTO AUTO STOP	•	•	•	•	
BI-AUTO - START/STOP	•	•	•	•	
5 modes of «Thermo- Sealing» («T- SUTURE»)	•		•		
Quantity of monopolar and bipolar outputs	2 –mono, 2 - bi	2 –mono, 1 - bi	2 –mono, 2 - bi	1 –mono, 1 - bi	1 –mono, 1 - bi

Security

The unit is of **CF type** (it has higher degree of protection than BF type units) with protection against defibrillator discharge.

The units' manufacturing is certified according to **ISO 9001** and **ISO 13485**



Russia

Tel.: +7 (343) 217-63-40, E-mail: fotek@fotek.ru

Please, visit our web-site to find additional information
about our products and to make an order

www.fotek.ru/en